

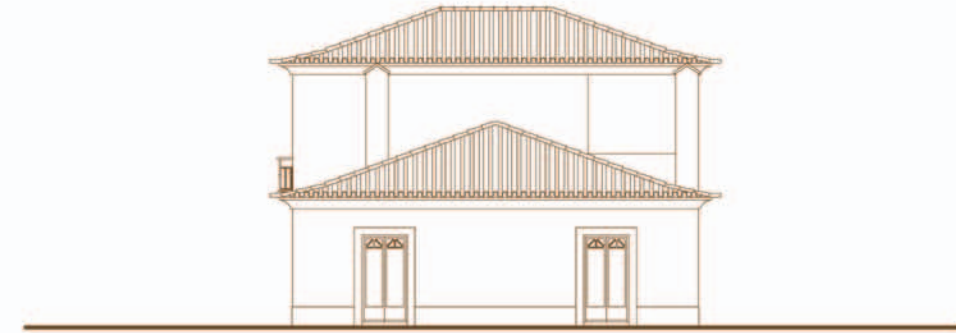
# ARCHITECT GUEDES AMORIM - VILLA TYPE 1



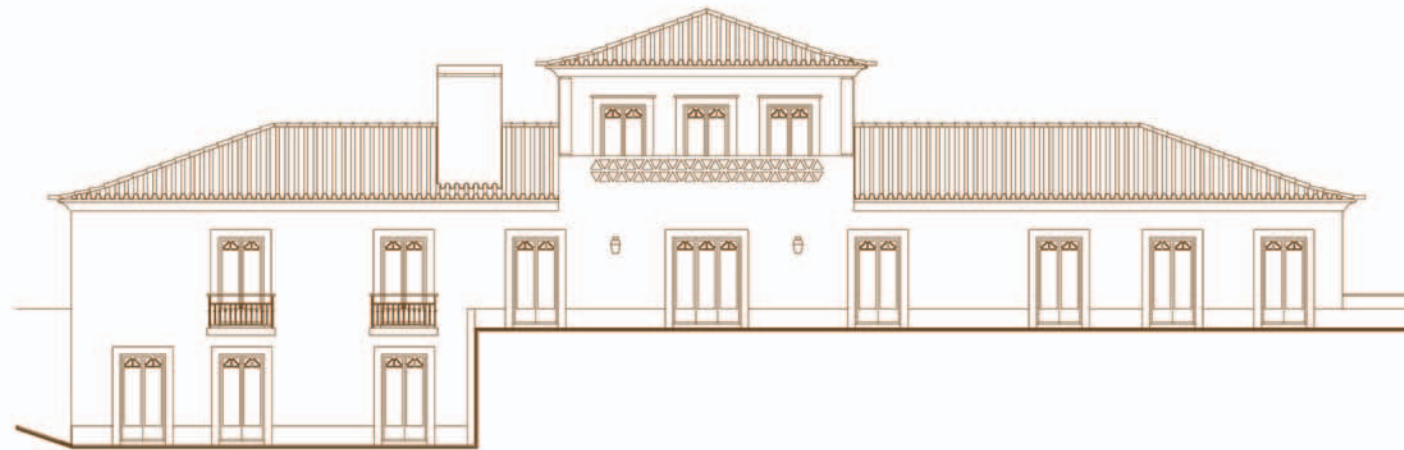
Main Elevation



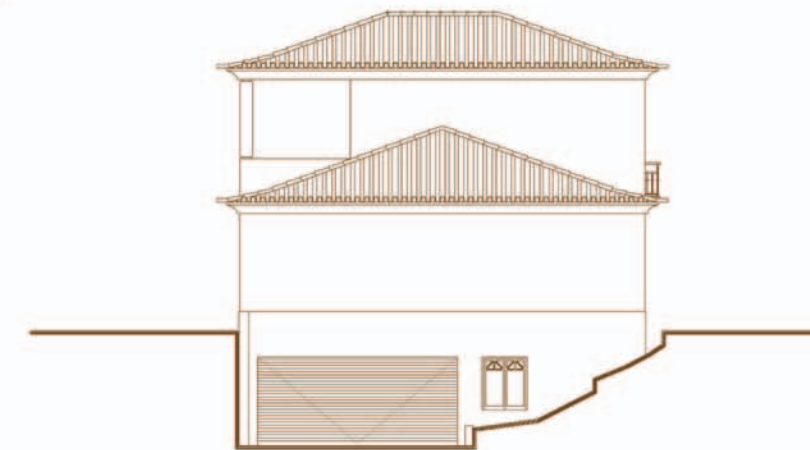
Right Elevation



Rear Elevation



Left Elevation



## Accommodation

- Hall
- Guest WC
- Double living room with fireplace or stove
- Dining room
- Library
- Kitchen
- 4 Bedrooms with en-suite bathrooms
- 1 Bedroom with en-suite bathroom and Dressing room
- Terraces
- Patios
- Laundry room
- Garage
- Daylight basement

## Materials and Finishings

### Kitchen

- Wall – ceramic tiles and painted stucco
- Flooring – terracotta
- Walls and base units - High Gloss
- Work surfaces - natural stone
- Stainless steel integrated appliances including:
  - Ceramic hob with touch control
  - Ducted Extractor
  - Microwave oven
  - Main oven with auto clean
- Tall Fridgefreezer
- Dishwasher

### Bathrooms

- Walls - ceramic tiles and painted stucco
- Flooring - terracotta
- Inset Vanity basin
- Toilet
- Bidet
- Bath (with shower)
- + Shower cabin (Master Bedroom)

### Other Areas

- Walls - painted stucco
- Flooring - terracotta

## Miscellaneous

- Automatic Entrance Gate
- Video Entry Control
- Telephone
- Cable TV
- Broadband Internet
- Security alarm
- Pre-installation for domotic
- Air conditioning with heat pump
- Gas central heating (external boiler)
- Swimming pool and Deck
- Finished gardens and grounds
- Automatic irrigation system

Drawings are illustrative only. Details and specification may be subject to variation and should not form part of any contract.